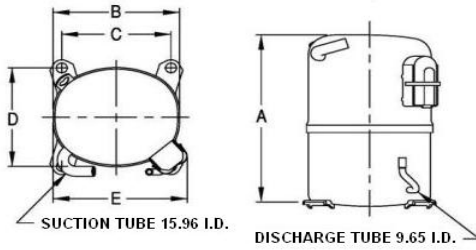




TEMPORARY

Tu R

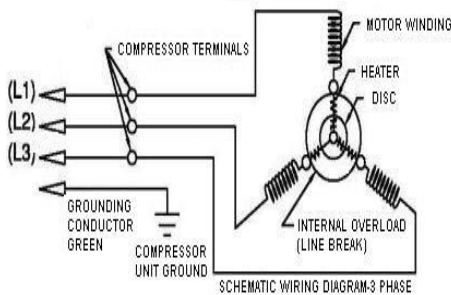
PRINCIPAL DIMENSIONS - mm



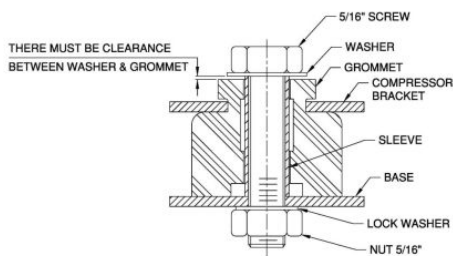
A: 324	B: 223	C: 191	D: 191	E: 239
--------	--------	--------	--------	--------

SCHEMATIC WIRING DIAGRAM -

SCHEMATIC WIRING DIAGRAM 3 PHASE



MOUNTING KIT



Electrical : 380-420 V/50 Hz., 460 V/60 Hz. 3 Phase

Nominal Performance

Capacity	9,168 / 10,976 Watts
	31,281 / 37,450 BTU/Hr
	7,883 / 9,438 Kcal/Hr
Power Input	3,235 / 3,840 Watts
Locked Rotor Amps	50.00 / 50.00 Amps
Max Continuous Current	- / - Amps
Rated Load Amps	7.10 / 7.20 Amps
COP	2.83 / 2.86 Watts / Watts
EER	9.67 / 9.75 BTU/W-Hr

Testing Conditions

Condensing Temperature	54.40 °C	129.9 °F
Evaporating Temperature	7.20 / - °C	45.0 / - °F
Liquid Temperature	46.10 °C	115.0 °F
Return Gas Temperature	35.00 °C	95.0 °F
Ambient Temperature	35.00 °C	95.0 °F

Application

Evaporating Temp. Range	HBP, A/C	@ 0.00 ° C to 13.00 ° C (32.0° F to 55.4° F)
	Heat Pump	- ° C to - ° C (-° F to -° F)
Refrigerant	R404A	
Refrigerant Flow Control	Capillary Tube	
Compressor Cooling	Fan	

Compressor and Motor data

Compressor Type	Reciprocating
Displacement	59.00 cc.
Oil Type	Mineral Oil
Oil Charge	964.00 cc.
Motor Type	3 PHASE ; 2 Pole 2,850 / 3,450 r/m
Voltage Range	342-462/414-506 Volts 50/60 Hz.

Winding Resistance at 25 ° C

L1-L2	2.74 Ohms
L1-L3	2.74 Ohms
L2-L3	2.72 Ohms
Weight with Oil	28.66 Kg.
Weight with Oil and Accessories	28.82 Kg.

Electrical Components

Motor Protector	
Type	Internal Overload
Model Number	KGE 658-6
Open / Close	140-150 / 52-70 ° C
1st Cycle trip at 25 ° C	57.0 Amps(start) - Amps(main)
Motor Starter (CSR Only)	
Terminal Cover	KGM 901-2
Start Capacitor (CSR Only)	No µF No VAC.
Disch Resistor for Start Cap	No
Run Capacitor	No µF No VAC.

Mounting Kit

Rubber Grommet	KGM 905
Sleeve Grommet	KGM 903
Washer	-

Since we are constantly improving our product , the specification are subject to change without notice.

REV. DATE	C / N No.
TCN 05-06-13	TCN 0209/13

Certificate Marks



RoHS

COMPRESSOR PERFORMANCE TABLE